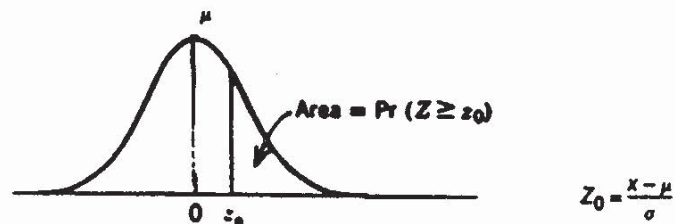


Table A-2. Areas under the Normal Probability Curve

Area to the right of z (or to the left of $-z$), or the probability of a random value of z exceeding the marginal value.

z_0	.00	.01	.02	.03	.04	.05	.06	.07	.08	.09
0.0	.500	.496	.492	.488	.484	.480	.476	.472	.468	.464
0.1	.460	.456	.452	.448	.444	.440	.436	.433	.429	.425
0.2	.421	.417	.413	.409	.405	.401	.397	.394	.390	.386
0.3	.382	.378	.374	.371	.367	.363	.359	.356	.352	.348
0.4	.345	.341	.337	.334	.330	.326	.323	.319	.316	.312
0.5	.309	.305	.302	.298	.295	.291	.288	.284	.281	.278
0.6	.274	.271	.268	.264	.261	.258	.255	.251	.248	.245
0.7	.242	.239	.236	.233	.230	.227	.224	.221	.218	.215
0.8	.212	.209	.206	.203	.200	.198	.195	.192	.189	.187
0.9	.184	.181	.179	.176	.174	.171	.169	.166	.164	.161
1.0	.159	.156	.154	.152	.149	.147	.145	.142	.140	.138
1.1	.136	.133	.131	.129	.127	.125	.123	.121	.119	.117
1.2	.115	.113	.111	.109	.107	.106	.104	.102	.100	.099
1.3	.097	.095	.093	.092	.090	.089	.087	.085	.084	.082
1.4	.081	.079	.078	.076	.075	.074	.072	.071	.069	.068
1.5	.067	.066	.064	.063	.062	.061	.059	.058	.057	.056
1.6	.055	.054	.053	.052	.051	.049	.048	.047	.046	.046
1.7	.045	.044	.043	.042	.041	.040	.039	.038	.038	.037
1.8	.036	.035	.034	.034	.033	.032	.031	.031	.030	.029
1.9	.029	.028	.027	.027	.026	.026	.025	.024	.024	.023
2.0	.023	.022	.022	.021	.021	.020	.020	.019	.019	.018
2.1	.018	.017	.017	.017	.016	.016	.015	.015	.015	.014
2.2	.014	.014	.013	.013	.013	.012	.012	.012	.011	.011
2.3	.011	.010	.010	.010	.010	.009	.009	.009	.009	.008
2.4	.008	.008	.008	.008	.007	.007	.007	.007	.007	.006

Table A-2. (continued)

z_0	Detail of tail ($.2135$, for example, means $.00135$)									
2.5	.006	.006	.006	.006	.006	.005	.005	.005	.005	.005
2.6	.005	.005	.004	.004	.004	.004	.004	.004	.004	.004
2.7	.003	.003	.003	.003	.003	.003	.003	.003	.003	.003
2.8	.003	.002	.002	.002	.002	.002	.002	.002	.002	.002
2.9	.002	.002	.002	.002	.002	.002	.002	.001	.001	.001
2.	.1228	.1179	.1139	.1107	.2820	.2621	.2466	.2347	.2256	.2187
3.	.2135	.3968	.3687	.3483	.3337	.3233	.3159	.3108	.4723	.4481
4.	.4317	.4207	.4133	.5854	.5541	.5340	.5211	.5130	.6793	.6479
5.	.6287	.6170	.7996	.7579	.7333	.7190	.7107	.8599	.8332	.8182
	0.0	0.1	0.2	0.3	0.4	0.5	0.6	0.7	0.8	0.9

Credit: Ronald J. Wonnacott and Thomas H. Wonnacott, *Introductory statistics*, 4th ed. (New York: John Wiley & Sons, 1985).